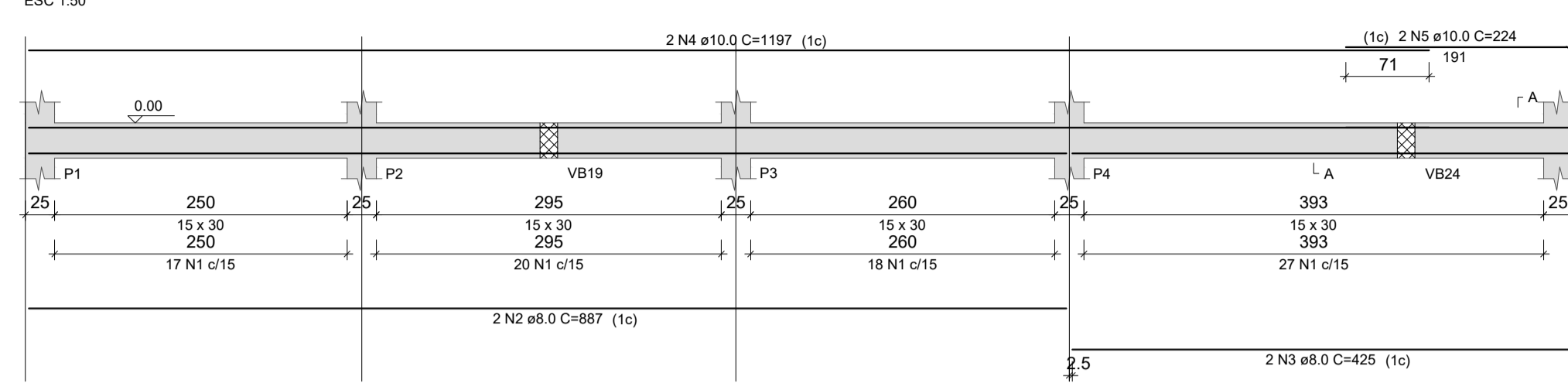
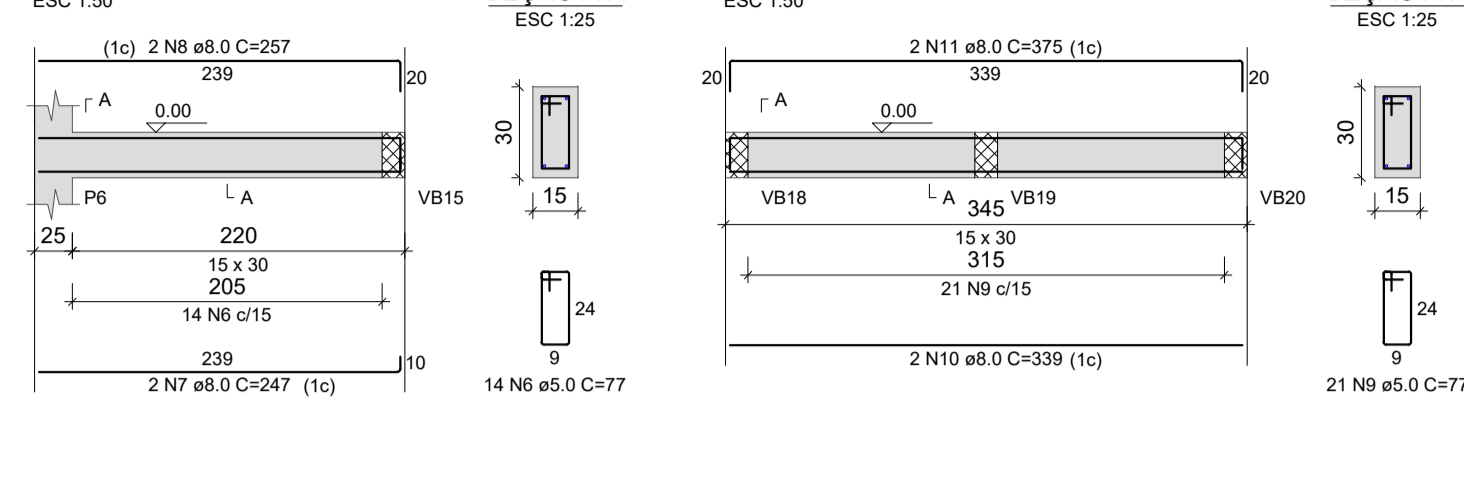


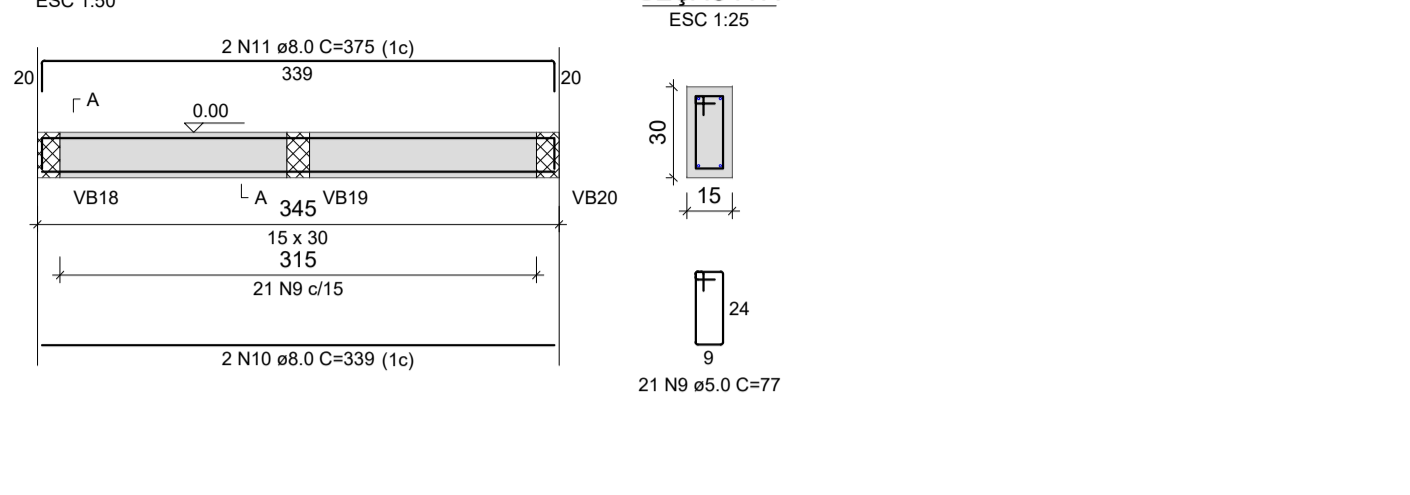
VB1



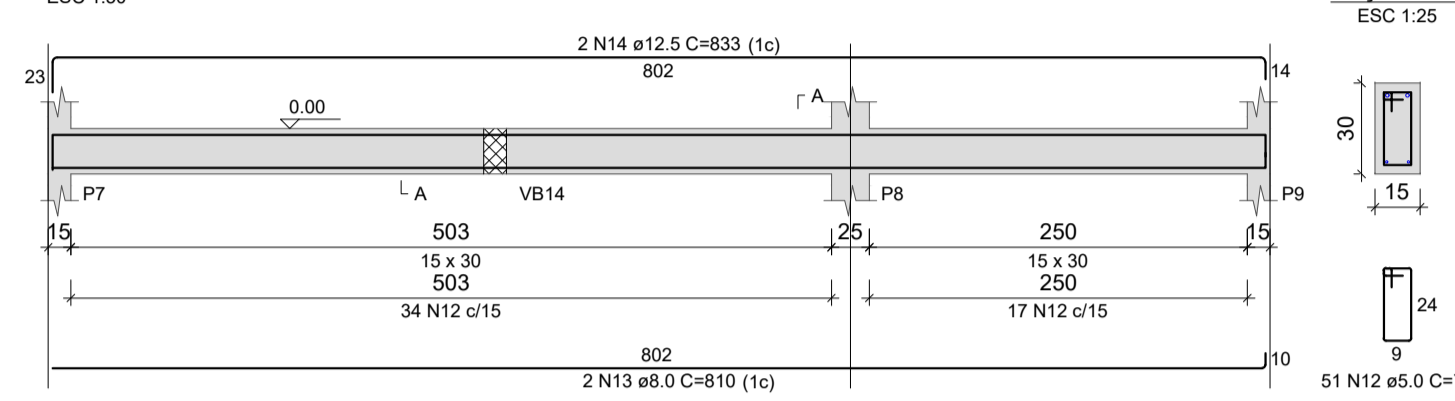
VB2



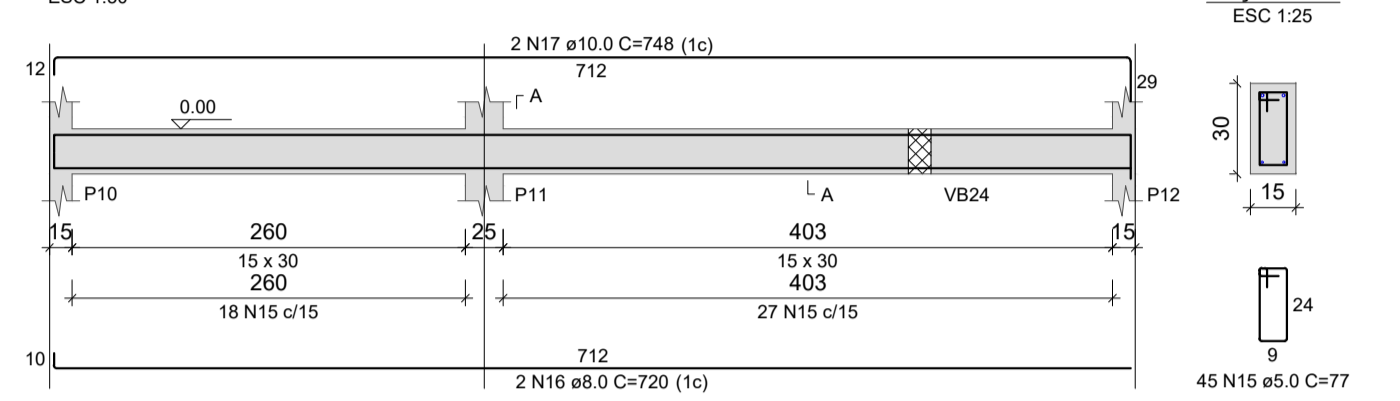
VB3



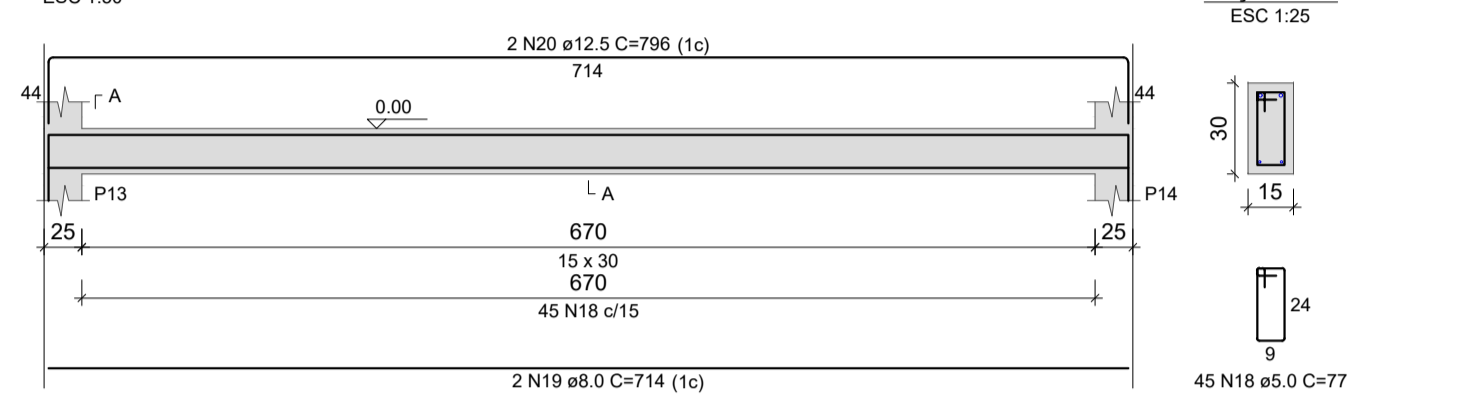
VB4



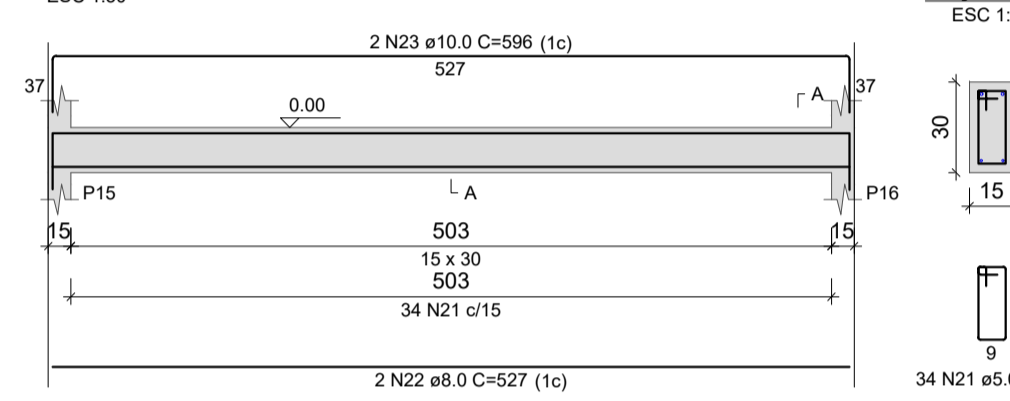
VB5



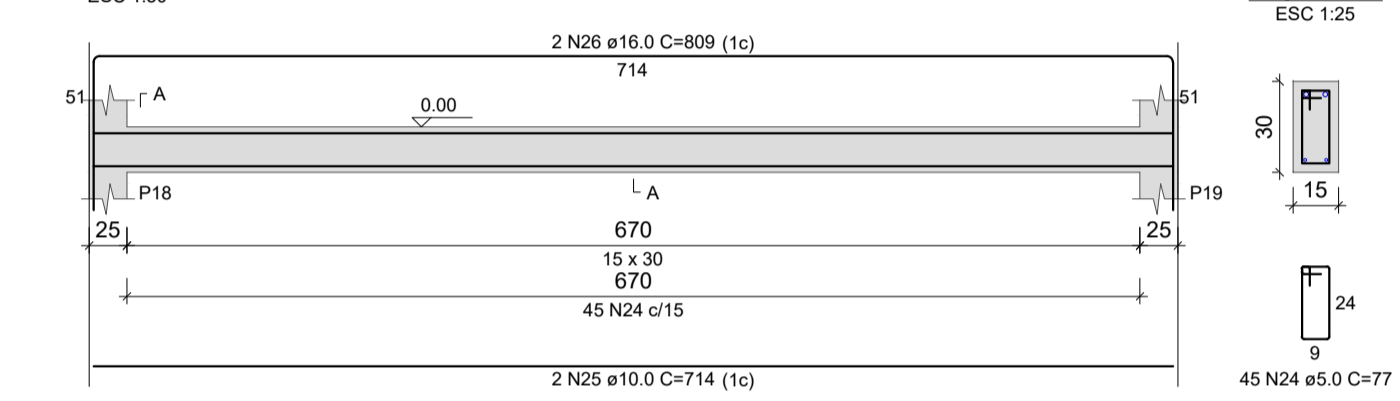
VB6



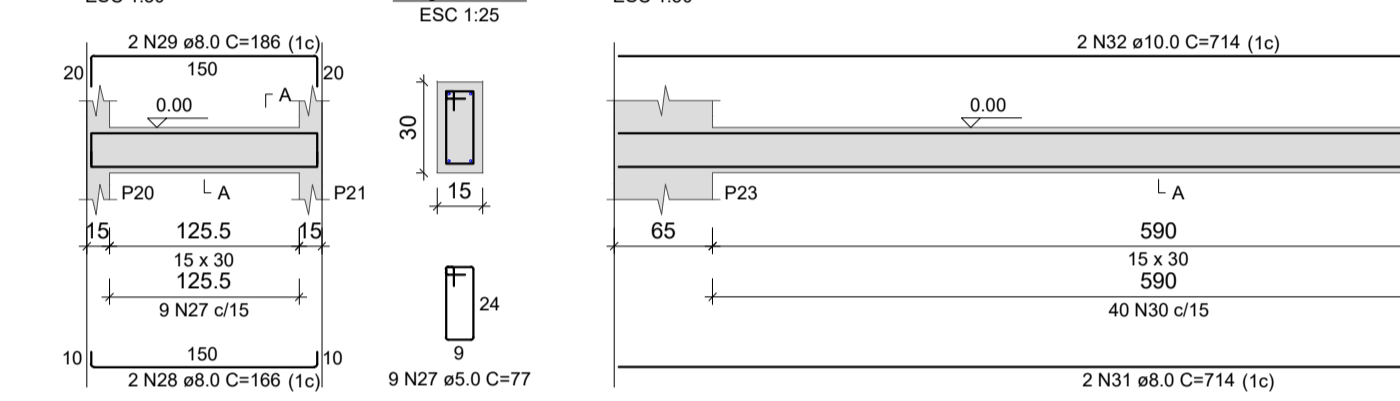
VB7



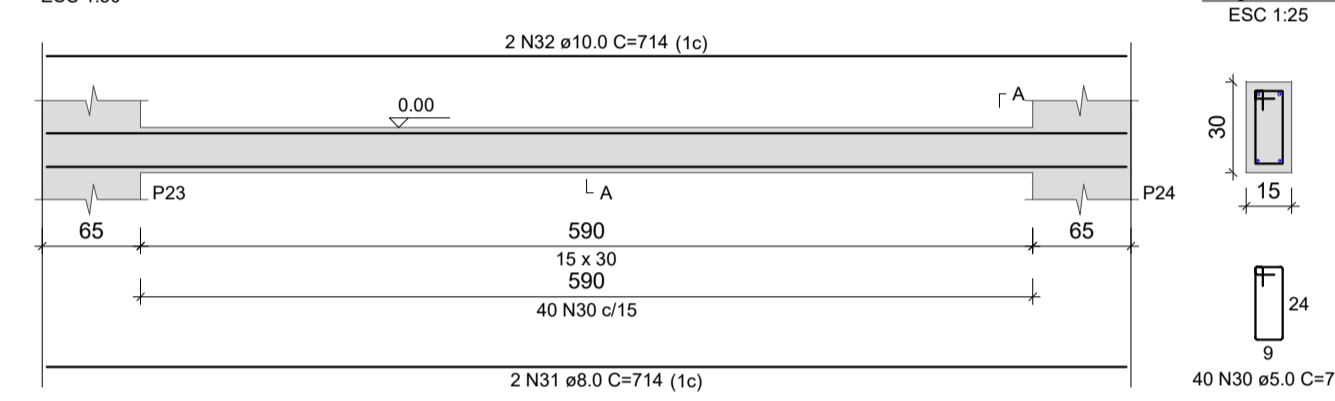
VB8



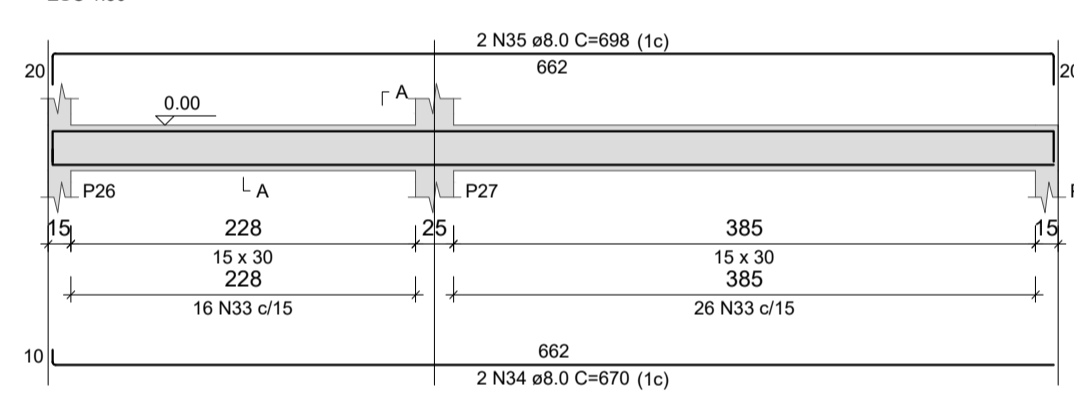
VB9



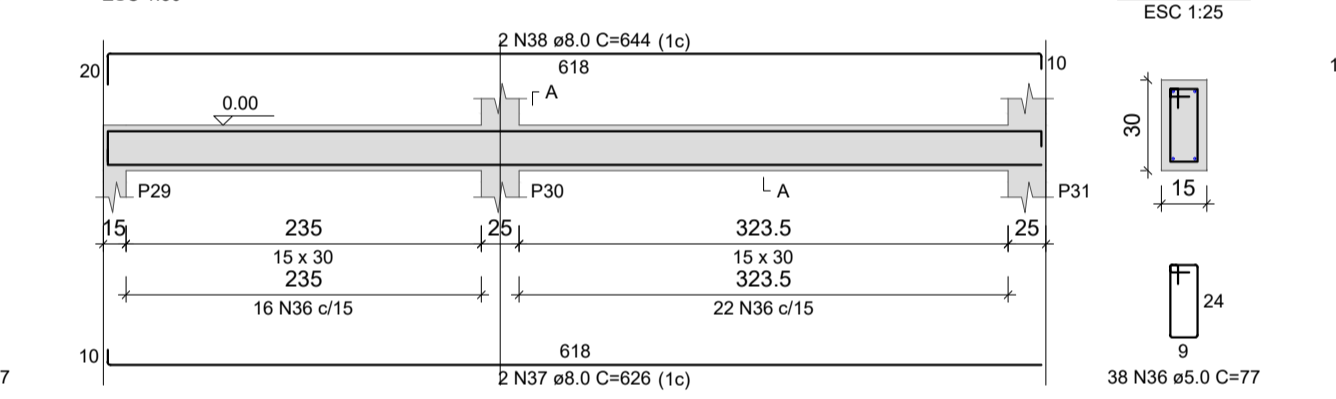
VB10



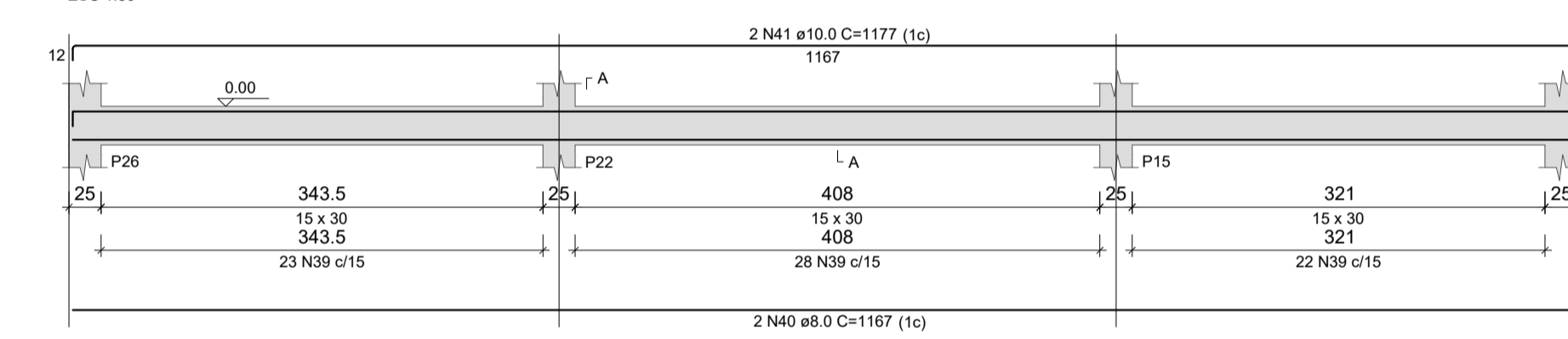
VB11



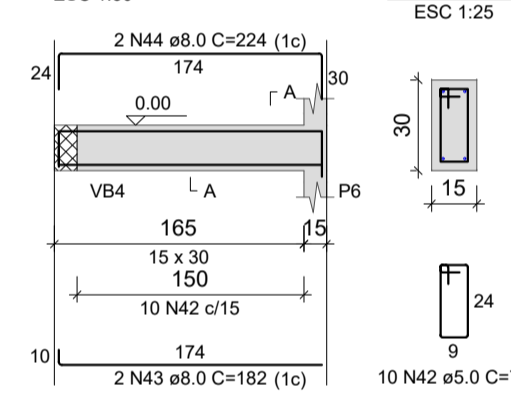
VB12



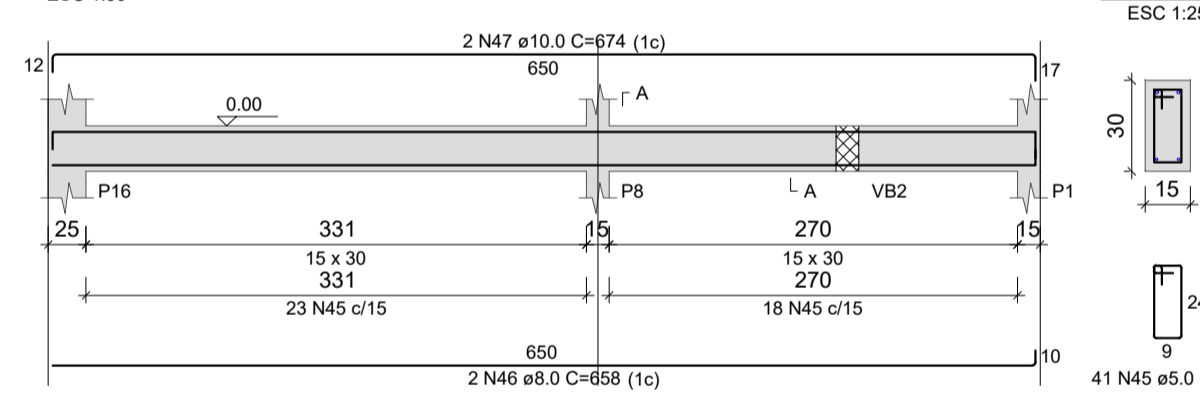
VB13



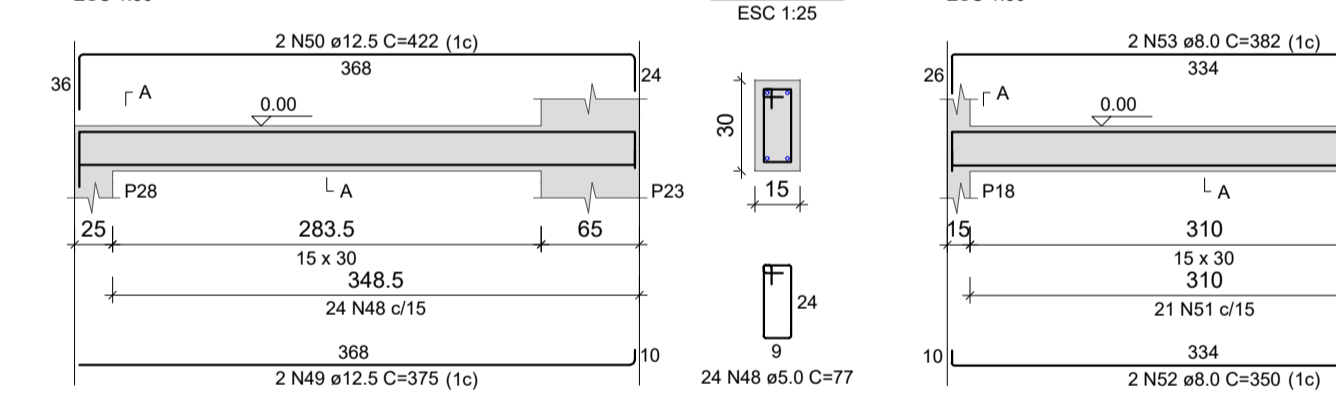
VB14



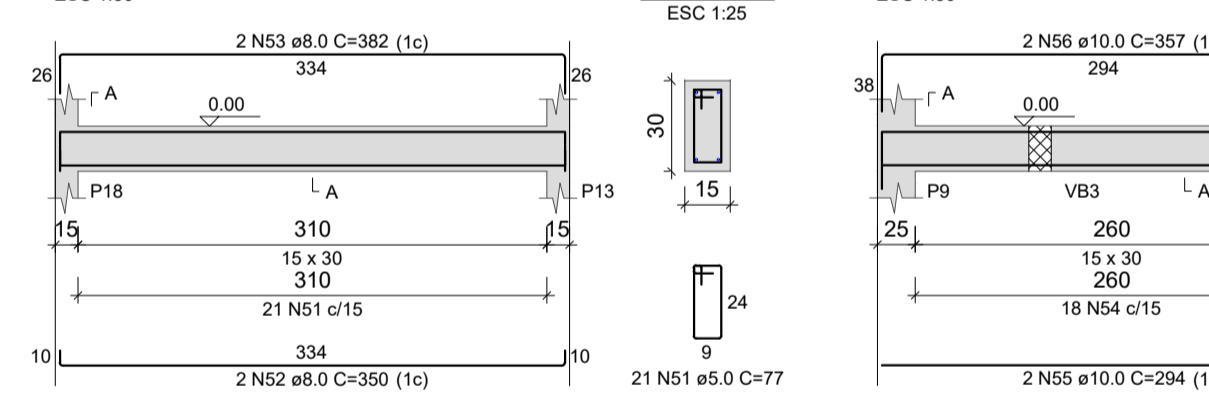
VB15



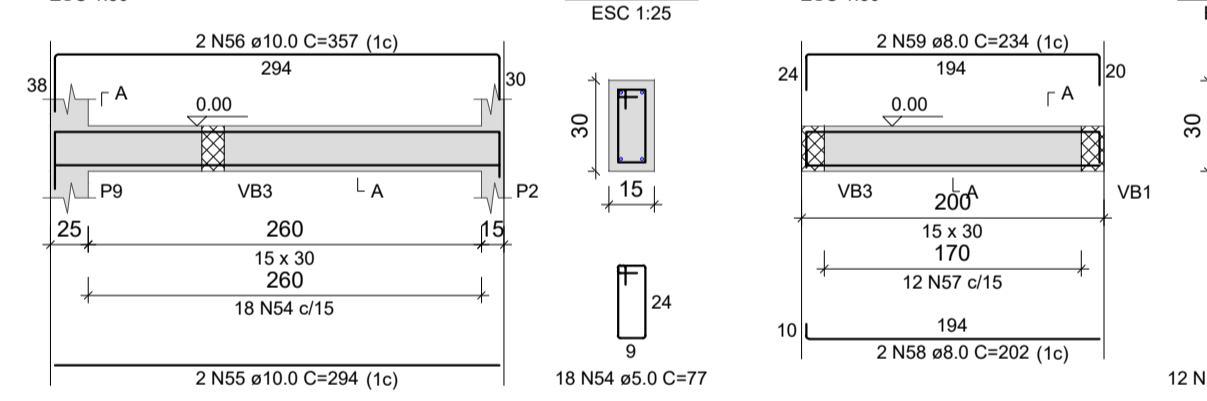
VB16



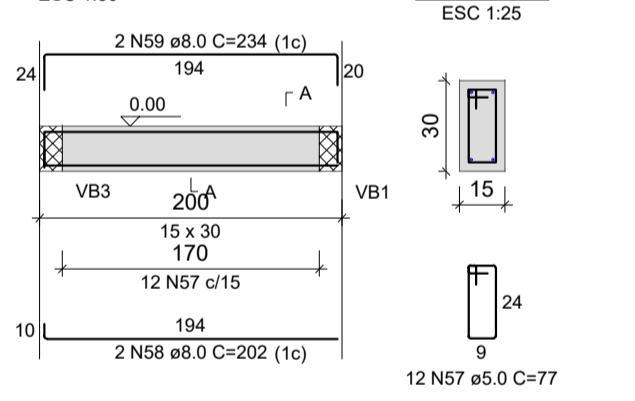
VB17



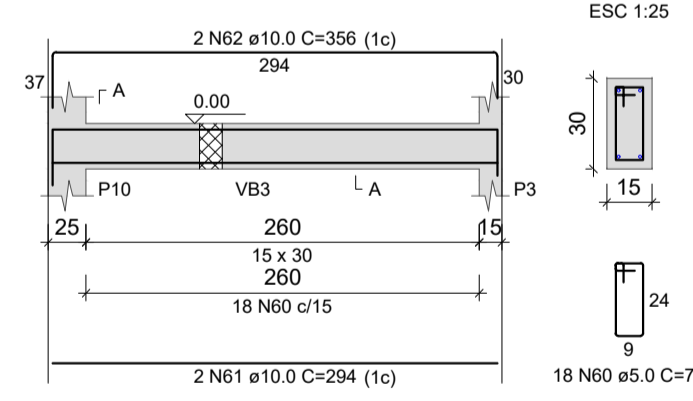
VB18



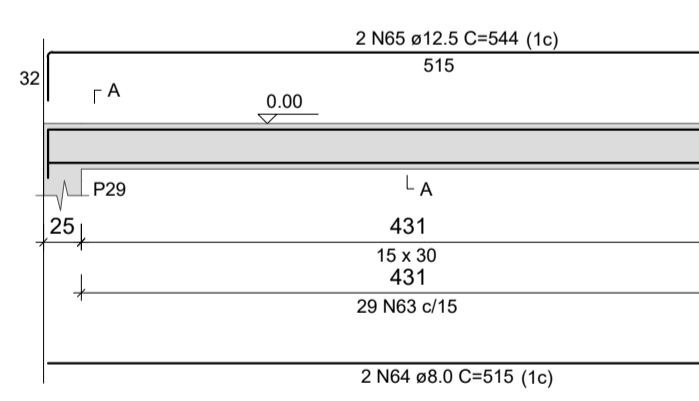
VB19



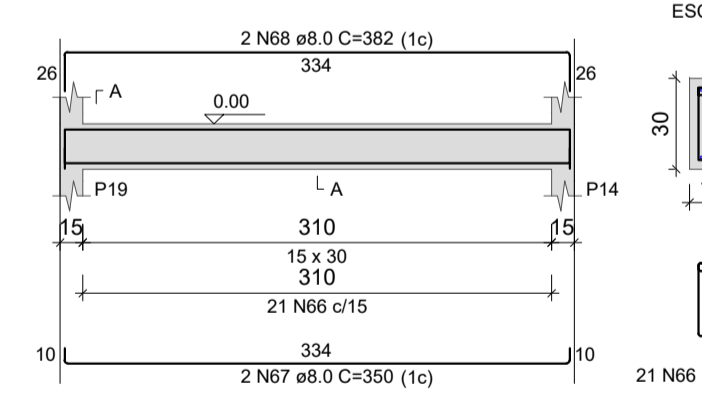
VB20



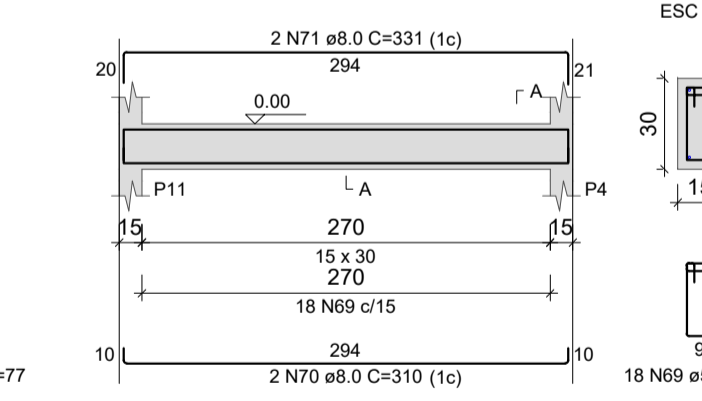
VB21



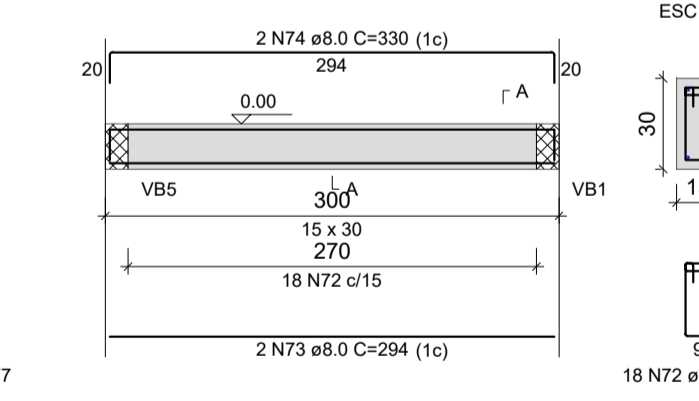
VB22



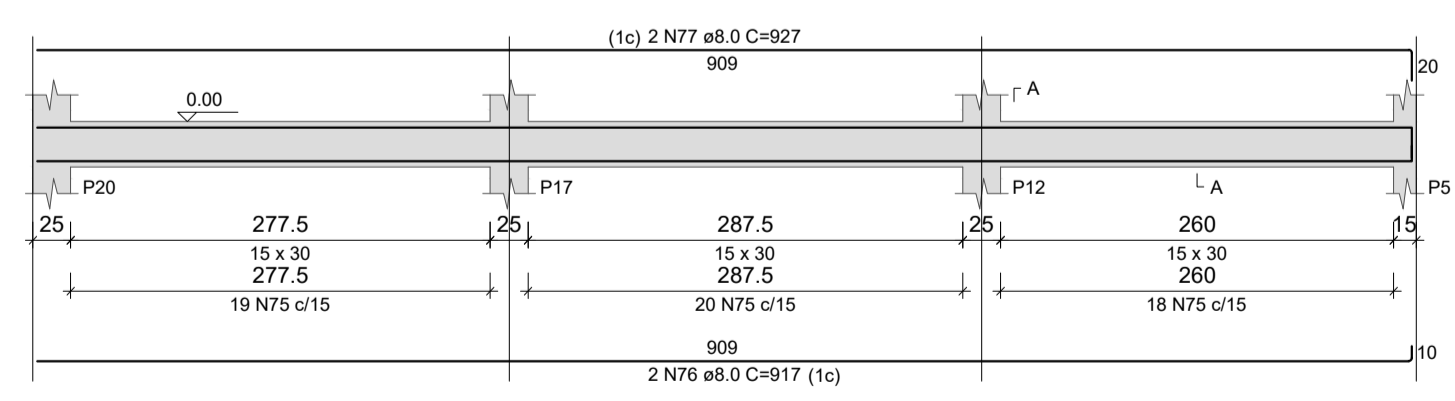
VB23



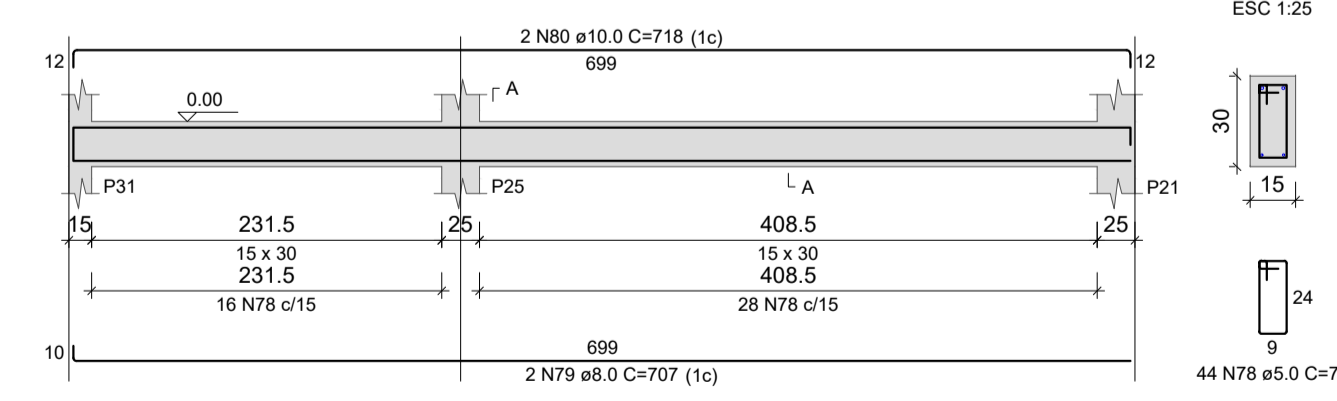
VB24



VB25



VB26



RELAÇÃO DO AÇO

ELEMENTO	AÇO	N	DIAM (mm)	QUANT	C.UNIT (cm)	C.TOTAL (cm)
VB1	CA50	1	8,0	82	77	6314
	CA60	2	10,0	2	89	174
VB2	CA50	3	8,0	2	425	850
	CA50	4	10,0	2	1197	2394
	CA50	5	10,0	2	224	448
	CA50	6	5,0	14	77	1078
	CA50	7	8,0	2	247	494
VB3	CA50	8	8,0	2	257	514
	CA50	9	5,0	2	247	494
	CA50	10	8,0	2	339	678
	CA50	11	8,0	2	375	750
VB4	CA50	12	8,0	2	810	1620
	CA50	13	12,5	2	833	1666
	CA50	14	5,0	51	77	3927
	CA50	15	8,0	2	339	678
VB5	CA50	16	5,0	45	77	3465
	CA50	17	8,0	2	720	1440
	CA50	18	5,0	45	77	3465
	CA50	19	10,0	2	748	1496
VB6	CA50	20	12,5	2	796	1592
	CA50	21	5,0	34	77	2618
	CA50	22	8,0	2	527	1054
	CA50	23	10,0	2	596	1192
VB7	CA50	24	5,0	45	77	3465
	CA50	25	10,0	2	714	1428
	CA50	26	10,0	2	809	1618
	CA50	27	5,0	9	77	693
VB8	CA50	28	8,0	2	166	332
	CA50	29	8,0	2	198	396
	CA50	30	5,0	40	77	3080
	CA50	31	10,0	2	714	1428
VB9	CA50	32	10,0	2	714	1428
	CA50	33	5,0	42	77	3234
	CA50	34	8,0	2	340	680
	CA50	35	8,0	2	698	1396
VB10	CA50	36	8,0	2	644	1288
	CA50	37	8,0	2	626	1252
	CA50	38	5,0	24	77	1848
	CA50	39	5,0	73	77	5621
VB11	CA50	40	8,0	2	1167	2334
	CA50	41	10,0	2	1177	2354
	CA50	42	5,0	10	77	770
	CA50	43	8,0	2	182	364
VB12	CA50	44	8,0	2	224	448
	CA50	45	5,0	41	77	3187
	CA50	46	5,0	24	77	1848
	CA50	47	10,0	2	674	1348
VB13	CA50	48	5,0	24	77	1848
	CA50	49	12,5	2	375	750
	CA50	50	12,5	2	422	844
	CA50	51	5,0	21	77	1617
VB14	CA50	52	8,0	2	350	700
	CA50	53	8,0	2	382	764
	CA50	54	5,0	16	77	1232
	CA50	55	10,0	2	294	588
VB15	CA50	56	10,0	2	357	714
	CA50	57	5,0	12	77	924
	CA50	58	8,0	2	234	468
	CA50	59	8,0	2	234	468
VB16	CA50	60	5,0	18	77	1386
	CA50	61	10,0	2	294	588
	CA50	62	10,0	2	356	712
	CA50	63	5,0	29	77	2233
VB17	CA50	64	8,0	2	515	1030
	CA50	65	12,5	2	644	1288
	CA50	66	5,0	21	77	1617
	CA50	67	8,0	2	350	700
VB18	CA50	68	8,0	2	382	764
	CA50	69	5,0	16	77	1232
	CA50	70	8,0	2	310	620
	CA50	71	8,0	2	331	662
VB19	CA50	72	5,0	16	77	1232
	CA50	73	8,0	2	294	588
	CA50	74	8,0	2	330	660
	CA50	75	5,0	17	77	1309
VB20	CA50	76	8,0	2	917	1834
	CA50	77	8,0	2	927	1854
	CA50	78	5,0	44	77	3388
	CA50	79	8,0	2	707	1414
VB21	CA50	80	10,0	2	718	1436

RESUMO DO AÇO

AÇO	DIAM (mm)	C.TOTAL (m)	PESO + 0% (kg)
CA50	8,0	349,3	137,8
CA50	10,0	161,3	99,4
CA50	12,5	59,4	57,2
CA50	16,0	16,2	25,5
CA50	5,0	669,9	103,3
PESO TOTAL (kg)			
CA50	320		
CA60	103,3		

Volume de concreto (C-25) = 6,38 m³
Área de forma = 106,37 m²

MINISTÉRIO DA DEFESA PCN	ANO: 2020	TIPO: EST	FOLHA: 06/11	MODIFICAÇÕES: A
Programa Calha Norte CONVENIENTE:	LOCAL: AVENIDA TANCREDO NEVES ESQUINA COM RUA ALCIDES LIMA BONFIM			B
OBRA: CONSTRUÇÃO DA SEDE DA PREFEITURA MUNICIPAL DE NOVA BRASÍLÂNDIA - MT	ÁREA: CONFORME PROJETO ARQUITETÔNICO			C
VIGAS BALDRAME	AUTOR: LEONARDO MARTINS			D
AUTOR: PREFEITO MUNICIPAL:	DESENHO: LEONARDO MARTINS	DATA: 10/09/2020	DIM: METRO	E
AUTOR:			ESCALA: INDICADA	F
				G
				H
				I